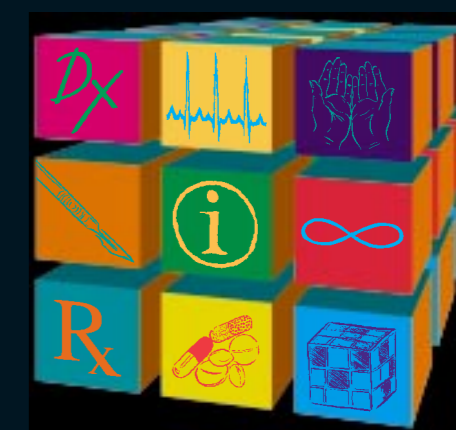


Evidence-Based Medicine

Editors: Brian Haynes & Paul Glasziou



Contents

Purpose and procedure	130	Review: home visiting with multidimensional assessment and multiple visits is effective in low risk elderly people	148
Additional articles abstracted in <i>ACP Journal Club</i>	131	Sertraline maintenance treatment reduced relapse and dropouts in post-traumatic stress disorder	149
EBM notebook		Review: brief interventions reduce drinking in patients not seeking treatment	150
Practice corner: using clinical prediction rules	132	A brief intervention reduced alcohol drinking for up to 48 months in problem drinkers	151
Resource review	135	A normal calcium, low protein, low salt diet reduced recurrence of renal stones over 5 years	152
Therapeutics		Physiotherapy or a wait and see policy were the best options for lateral epicondylitis at 1 year	153
Oestrogen plus progestogen increased coronary heart disease and breast cancer events in postmenopausal women	137	Bed rest, physiotherapy, and continuation of activities of daily living were equally effective for sciatica	154
Review: postmenopausal oestrogen replacement therapy increases the risk for venous thromboembolism	138	Review: antiemetic drugs reduce nausea in early pregnancy	155
A lifestyle intervention or metformin prevented or delayed the onset of type 2 diabetes in people at risk	139	Telephone-based peer support increased the duration of breast feeding in primiparous mothers	156
Warfarin combined with low dose aspirin in myocardial infarction did not provide clinical benefit beyond that of aspirin alone	140	Clonidine and methylphenidate were effective for attention deficit hyperactivity disorder in children with comorbid tics	157
Review: angiotensin receptor blockers do not reduce mortality or hospital admission rates in heart failure	141	Pharmacist review changed more repeat prescriptions for elderly patients than usual general practice review	158
Review: n-3 polyunsaturated fatty acids reduce fatal myocardial infarction, sudden death, and overall mortality in coronary artery disease	142	Diagnosis	
Parental education and guided self management of asthma or wheeze in pre-school children was not effective	143	Review: questionnaires for detecting clinical depression in primary care have similar diagnostic accuracy	159
Review: inhaled corticosteroids for asthma or chronic obstructive pulmonary disease do not increase bone loss	144	Aetiology	
Review: nedocromil sodium decreases airflow reduction and recovery time in exercise induced bronchoconstriction	145	Increased plasma total homocysteine levels increased the risk for dementia in the elderly	160
Review: β_2 agonists are ineffective but increase adverse effects in acute bronchitis without underlying pulmonary disease	146		
Review: tricyclic antidepressants, capsaicin, gabapentin, and oxycodone are effective for postherpetic neuralgia	147		